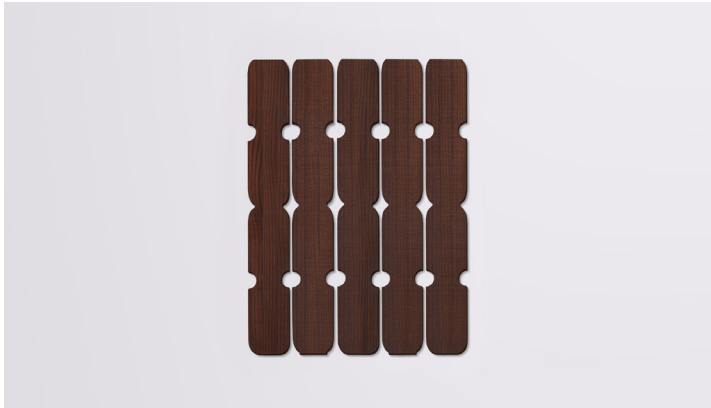


Trubridge Screening



Overview

A designer range of paling and screening panels, the Trubridge selection of nature inspired profiles create a sophisticated exterior space. Each profile is individually cut to allow airflow and natural light while maintaining privacy. Other applications include ceiling lining and decorative interiors.

Wood species:

Vulcan Thermally Modified Radiata Pine or Stratos Radiata Pine.

Colours presented are in Protector Oil and are indicative only. Colour may change/fade as a part of the natural weathering process.



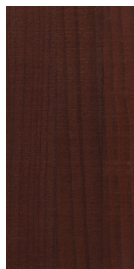
Vulcan Ebony



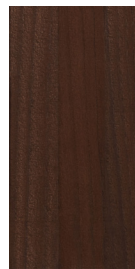
Vulcan Walnut



Vulcan Graphite



Vulcan Manuka



Vulcan Teak



Vulcan Patina



Vulcan Straw



Vulcan Sioo.x
(Weathered 1 yr)

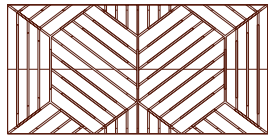


Stratos Radiata
Pine

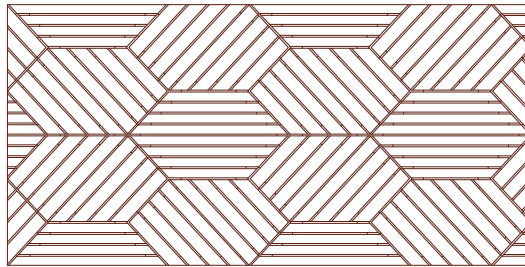
*Colours are indicative only.

Trubridge Screening

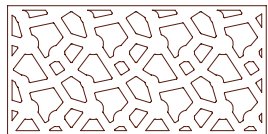
Standard profiles:



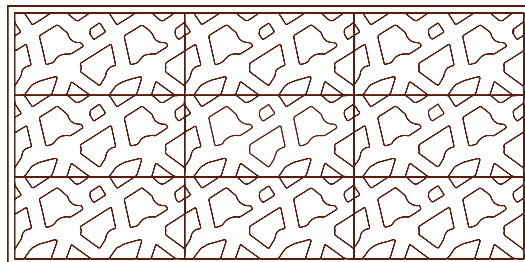
Hex Weave
Plywood Tiles
575 x 1170 x 12mm



Hex Weave
Plywood Panels
1170 x 2390 x 12mm



Pohuehue
Plywood Tiles
575 x 1170 x 12mm



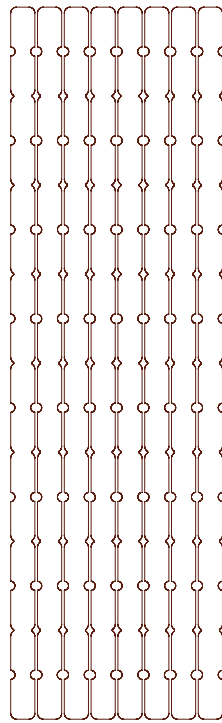
Pohuehue
Plywood Panels
1170 x 2390 x 12mm

Timber options:
Vulcan Thermally Modified Plywood
(available with band sawn finish only).
Stratos Radiata Pine Plywood.

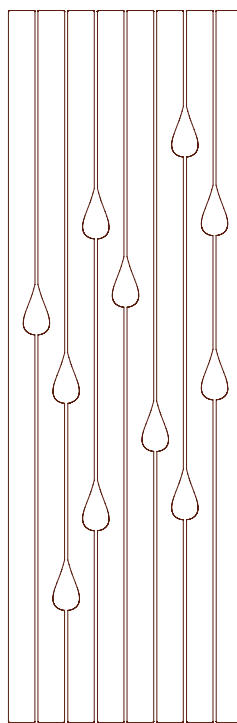
Other custom profiles are available but may be subject to min order quantities.

Trubridge Screening

Standard profiles:



Maukoro Paling
90 x 19mm



Nikau Paling
(set of 8)
90 x 19mm

Lengths:
1800, 2100, 2400mm

Timber options:
Vulcan thermally modified timber,
Stratos Radiata Pine.

Other custom profiles are available but may be subject to min order quantities.

Product specifications

Name:	Trubridge Screening.
Quality:	Select Grade /Front face and edges virtually free of any defects but with one edge knot and one small face defect allowed per piece in 20% of boards only. Back side with some defects allowed.
Substrate colour:	Vulcan – Chocolate Brown; Stratos Radiata Pine- Straw/White.
Finish:	Smooth dressed or Band sawn.
Treatment:	Vulcan – Thermally modified; Stratos Radiata Pine- available H3:1 OPX preservative treated for exterior.
Coating:	Exterior – At least one coat must be applied all sides including back face, and ends, and at least two coats to the front face and edges with Protector Oil, Sioo:x or other approved proprietary wood stain. Interior – Optionally apply stain, polyurethane or high solids oil. Tip: For Radiata Pine use 5% white pigment base high solids oil eg: Natural House Java Oil to prevent yellowing of the timber.
Moisture content:	< 16% MC (+/-2%) at time of dispatch.
Intended use:	Interior ceiling and wall panelling, soffit lining, exterior screening.
Fire:	Interior- Group 3 or Group 1S using Fireshield coating system (further info avail from Resene).
Durability:	Conforms to minimum 15 year durability performance for non-structural exterior elements as prescribed in the NZBC.
Serviceable life:	30 years or more when maintained according to manufacturer's recommendations.

Trubridge Screening

Product specifications

Expected dimensional change in structure:	Width expansion approx 3%, length expansion approx 0.5%, thickness expansion approx 2% (variation may occur between boards).
Density:	450-480 kg/m ³ .
Hardness:	Medium-Low (3.5kN Janka).
Compatibility:	Vulcan and Stratos have little or no corrosiveness on metals (equivalent to untreated softwood) and can be placed in contact with most building materials Normal PVA, PU, MUF glues and RF resins can be used.
Certification:	FSC®-certified, No.: SGS-COC-004944.

Product handling

- Timber and accessories must be kept clean dry, under cover and out of the weather prior to installation.
- Timber must be stored horizontally on bearers at least 100mm off the ground.
- Extra care must be taken during installation so as not to damage the factory finish of the boards.
- Wear dust mask, eye protection when cutting timber.
- Timber may disposed of as mulch, landfill or burnt.

Fixing overview

- Timber framing must be in accordance with NZS3604.
- Screening should not be installed if higher than 16% moisture content.

Palings

- Fix boards onto battens spaced at maximum 800mm centres.
- For exterior application use stainless steel fixings.
- Apply 2 fixings per batten either face fix or secret edge fix using Camo system or similar.
- Allow 5mm gap between board edges.
- Fixings at ends of boards must be pre-drilled before applying the fastener.
- Boards must be seal all sides and cut ends with coating for weather-exposed applications.

Plywood

- Fix boards onto battens spaced at maximum 600mm centres.
- Interior – Apply a bead of exterior polyurethane construction adhesive to each batten. Pin nail boards with 40mm x 1.8mm stainless steel panel pin (hand driven or mechanically driven) per batten or face screw fix with Abodo 45mm trim head black screw at 150mm centres around outside of panel and 300mm centres in the middle.
- Exterior – use stainless steel screw fixing only - Abodo 45mm trim head black screw recommended. Fixings at 150mm centres around outside of panel and 300mm through middle of 1190x2390 panel.
- Boards must be seal all sides with coating for weather-exposed applications.

Maintenance

- Wash down every 6-12 months with gentle detergent, warm water and soft brush.
- If possible it is recommended to apply a further coat of oil or stain after approx 12 months of weathering.
- Make a maintenance check every two summers.
- Re-coat every 2-3 years or as required to maintain colour and integrity of coating. Re-coat period may be longer or shorter depending on climatic conditions and/or positioning of timber to the sun.
- For heavily soiled or mouldy areas use Rejuvenator or similar oxalic cleaner, active mouldicide and recoat with penetrating oil.

Trubridge Screening

Accessories

Abodo Protector – Oil Borne 1L, 4L, 10L, 20L:



Abodo Stainless Steel Cladding Screw 4.0 x 45mm:



P +64 9 249 0100
E info@abodo.co.nz
W abodo.co.nz